

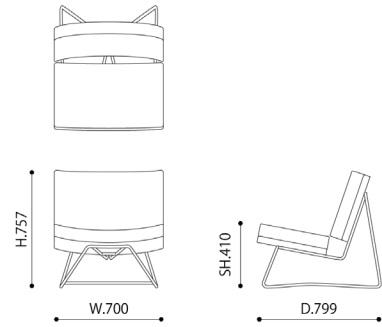
# PERHO CHAIR

Ilkka Suppanen, 2007

---

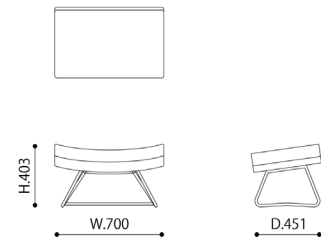
## Chair

CODE | IS2037  
SIZE | W.700 × D.799 × H.757 / SH.410  
MATERIAL | Frame : Powder coated steel  
Seat : Urethane foam + Fabric or Vinyl leather  
PRICE | A type : ¥231,000- (excluding tax : ¥210,000-)  
B type : ¥242,000- (excluding tax : ¥220,000-)  
C type : ¥253,000- (excluding tax : ¥230,000-)  
D type : ¥275,000- (excluding tax : ¥250,000-)



## Ottoman

CODE | IS2037-OT  
SIZE | W.700 × D.451 × H.403  
MATERIAL | Frame : Powder coated steel  
Seat : Urethane foam + Fabric or Vinyl leather  
PRICE | A type : ¥121,000- (excluding tax : ¥110,000-)  
B type : ¥132,000- (excluding tax : ¥120,000-)  
C type : ¥143,000- (excluding tax : ¥130,000-)  
D type : ¥154,000- (excluding tax : ¥140,000-)



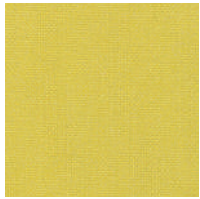
## FABRIC A TYPE

NC

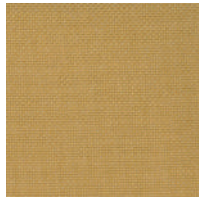
70% Acrylic 30%Wool

ウールを使用しているため、天然素材特有の自然な質感がありながらも、耐久性に優れています。  
平織でシンプルかつカラーバリエーションが豊富なため、部屋の雰囲気に合わせてやすい生地です。

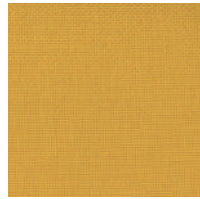
1/3



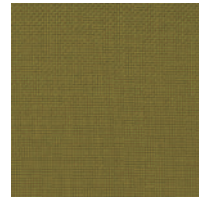
NC-058



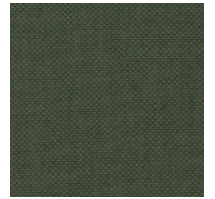
NC-019



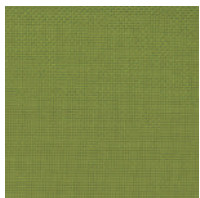
NC-177



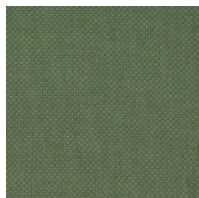
NC-178



NC-029



NC-031



NC-028



NC-030



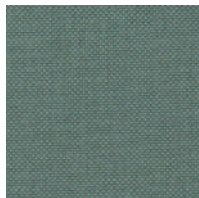
NC-033



NC-034



NC-062



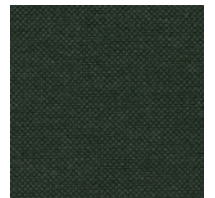
NC-113



NC-160



NC-180



NC-116



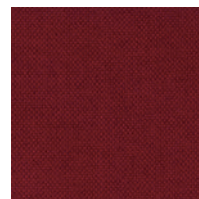
NC-039



NC-111



NC-059



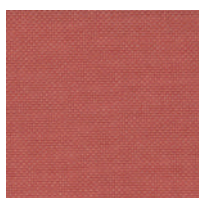
NC-107



NC-104



NC-061



NC-040



NC-158



NC-176



NC-060

# FABRIC A TYPE

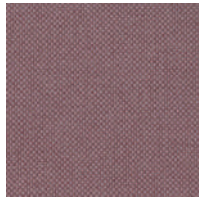
NC

70% Acrylic 30%Wool

2/3



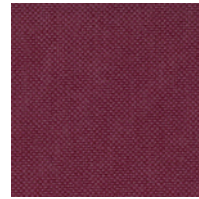
NC-101



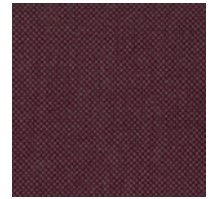
NC-131



NC-103



NC-041



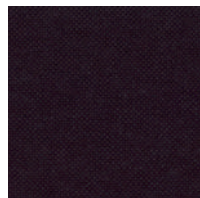
NC-132



NC-145



NC-018



NC-020



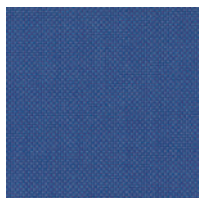
NC-045



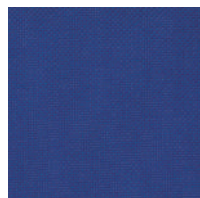
NC-052



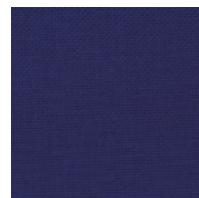
NC-024



NC-023



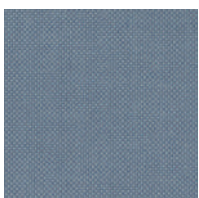
NC-024



NC-159



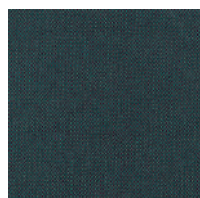
NC-186



NC-140



NC-055



NC-057



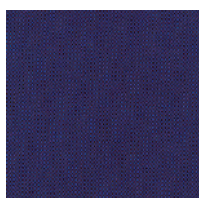
NC-044



NC-027



NC-120



NC-054



NC-053



NC-043



NC-010

# FABRIC A TYPE

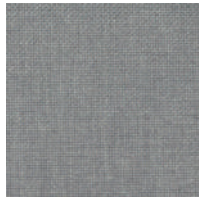
NC

70% Acrylic 30%Wool

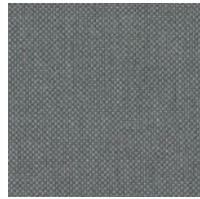
3/3



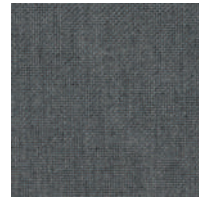
NC-035



NC-125



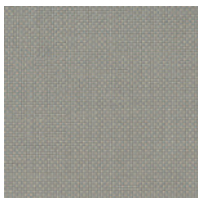
NC-136



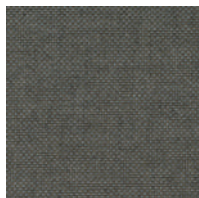
NC-126



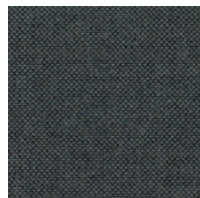
NC-127



NC-143



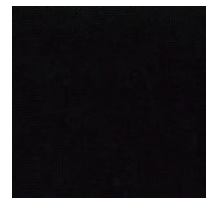
NC-012



NC-157



NC-128



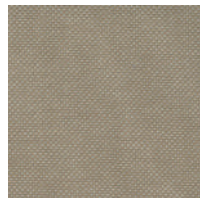
NC-129



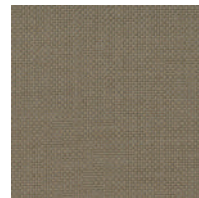
NC-011



NC-121



NC-035



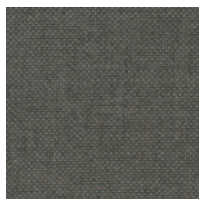
NC-122



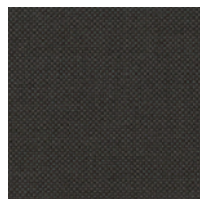
NC-156



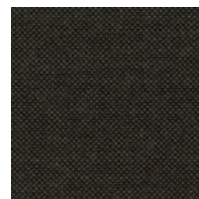
NC-051



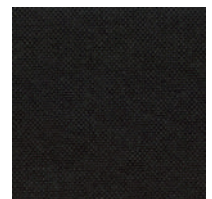
NC-012



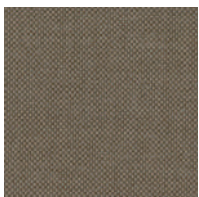
NC-013



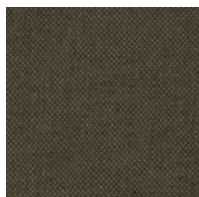
NC-014



NC-015



NC-156



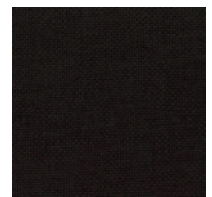
NC-123



NC-130



NC-124



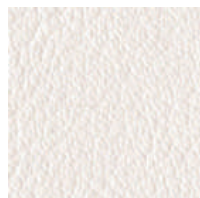
NC-016

## FABRIC A TYPE

### HILARGO

100% Vinyl Chloride

メンテナンス性に優れており、普段の手入れは乾拭きか水拭きで充分です。  
厚みがあり、ソファが張り感のある綺麗なフォルムになります。



LG-8598(2432)



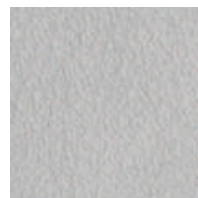
LG-8599(2437)



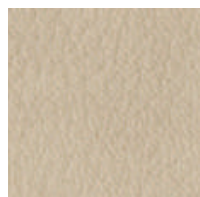
LG-8600(2442)



LG-8601(2447)



LG-8602(2452)



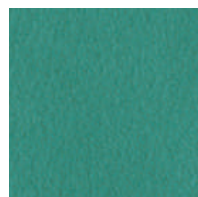
LG-8603(2433)



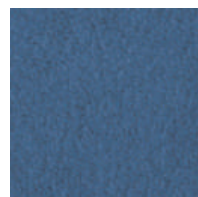
LG-8604(2438)



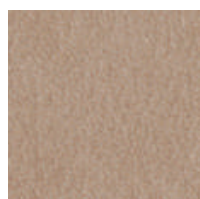
LG-8605(2443)



LG-8606(2448)



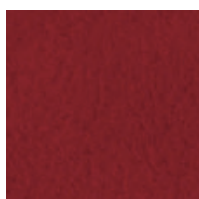
LG-8607(2453)



LG-8608(2434)



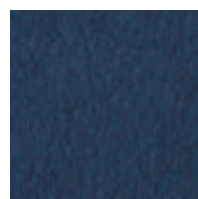
LG-8609(2439)



LG-8610(2444)



LG-8611(2449)



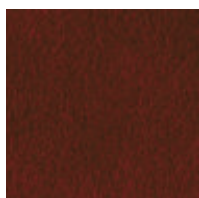
LG-8612(2454)



LG-8613(2435)



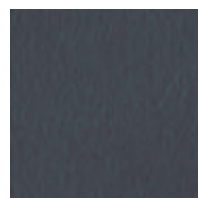
LG-8614(2440)



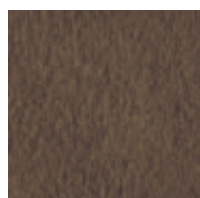
LG-8615(2445)



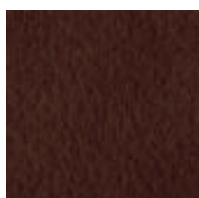
LG-8616(2450)



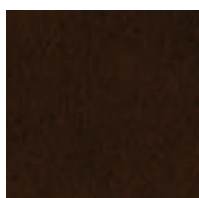
LG-8617(2455)



LG-8618(2436)



LG-8619(2441)



LG-8620(2446)



LG-8621(2451)



LG-8622(2456)

## FABRIC B TYPE

### CALEIDO

37% Linen 63% Cotton

自然素材で色染めしていますので、鮮やかでありながら優しい色合いが特徴です。

また、天然素材の中でも強度のある繊維のため、長年お使いいただいても毛玉になりにくく、耐久性も高いです。

1/2



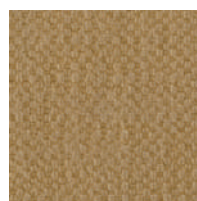
CL-1410  
VANILLA



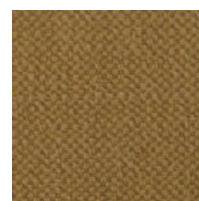
CL-1419  
IVORY



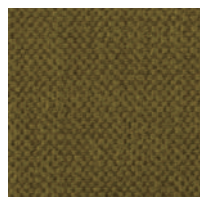
CL-3788  
ECRU



CL-2897  
MUSTARD



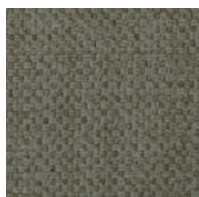
CL-1404  
SAFFRON



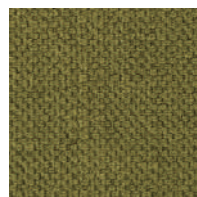
CL-1528  
OLIVE



CL-4001  
BASIL



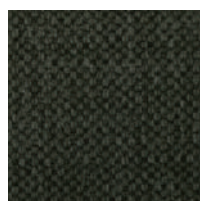
CL-4003  
GROVE



CL-4225  
MOSS



CL-2763  
FOREST



CL-3798  
HEARB



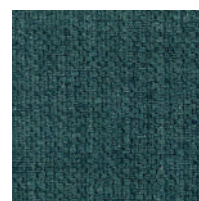
CL-2248  
MINT



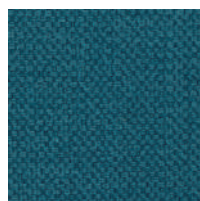
CL-1469  
AQUA



CL-4724  
COAST



CL-1551  
VIRIDIAN



CL-4191  
LAKE BLUE



CL-1471  
WATER BLUE



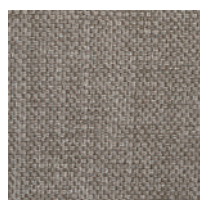
CL-1470  
INDIGO



CL-1499  
BLUE



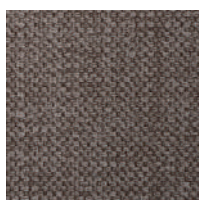
CL-3790  
TAUPE



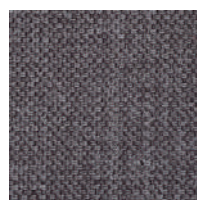
CL-4191  
LAKE BLUE



CL-3790  
TAUPE



CL-4201  
LINEN TWEED



CL-4141  
SMOKE

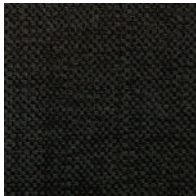


CL-4705  
BROWN OAK

FABRIC B TYPE

CALEIDO

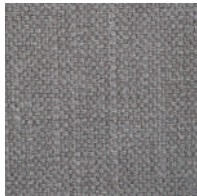
37% Linen 63% Cotton



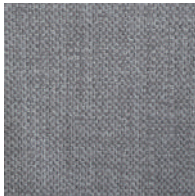
CL-2884  
CHOCOLATE



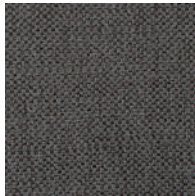
CL-2934  
CHARCOAL



CL-4772  
FEATHER



CL-1497  
GERY



CL-5720  
MERINO



CL-4298  
ROVE



CL-5619  
STEEL



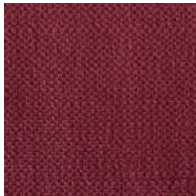
CL-4004  
GRAPE



CL-4002  
LAVENDER



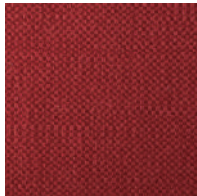
CL-4006  
RASBERRY



CL-1459  
PLUM



CL-2490  
CORAL



CL-2898  
ROUGE

## FABRIC B TYPE

MODENA

100% Cotton

自然素材で色染めしていますので、鮮やかでありながら優しい色合いが特徴です。

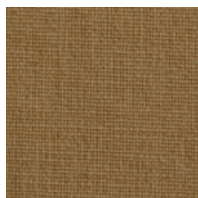
また、天然素材の中でも強度のある繊維のため、長年お使いいただいても毛玉になりにくく、耐久性も高いです。



MD-7196  
BISCUIT



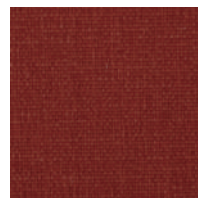
MD-7768  
ANTIQUE BEIGE



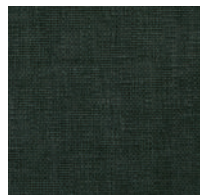
MD-7313  
PAPRIKA



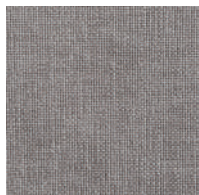
MD-7246  
CORAL



MD-7698  
BRICK



MD-7200  
RAINFOREST



MD-7022  
ASH



MD-7581  
DENIM



## FABRIC D TYPE

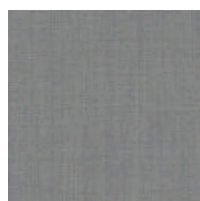
REMIX 3

90% NEW WOOL WORSTED 10% NYRON

緻密でミニマルな織りの生地。

最大3トーン重ねて作られるメランジェ糸を2種類組み合わせることで生まれる鮮やかな色彩が特徴です。

1/3



RE-0123



RE-0126



RE-0133



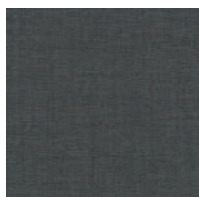
RE-0136



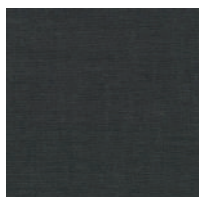
RE-0143



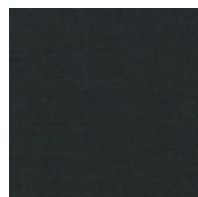
RE-0152



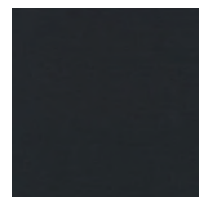
RE-0163



RE-0173



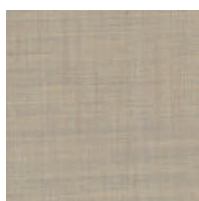
RE-0183



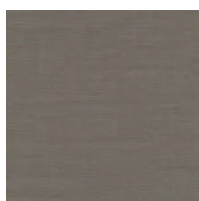
RE-0196



RE-0113



RE-0223



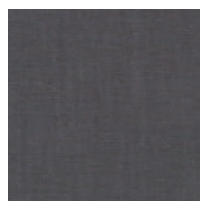
RE-0233



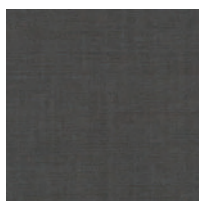
RE-0242



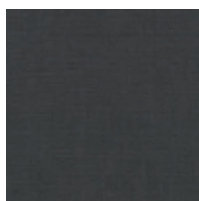
RE-0252



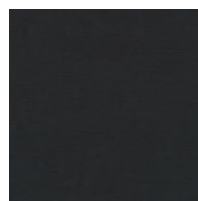
RE-0266



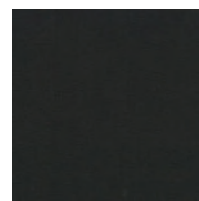
RE-0276



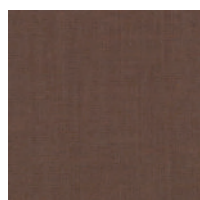
RE-0286



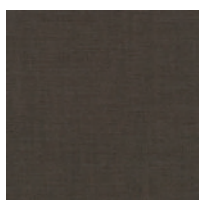
RE-0296



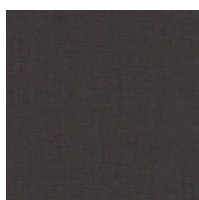
RE-0393



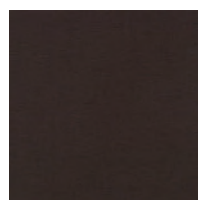
RE-0346



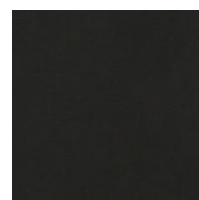
RE-0356



RE-0362



RE-0373



RE-0383

# FABRIC D TYPE

REMIX 3

90% NEW WOOL WORSTED 10% NYRON

2/3



RE-0406



RE-0516



RE-0536



RE-0543



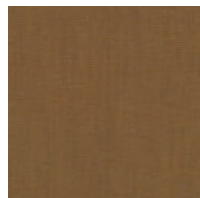
RE-0566



RE-0412



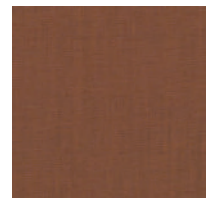
RE-0422



RE-0433



RE-0443



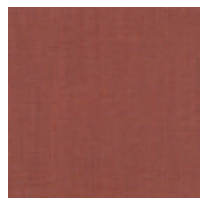
RE-0452



RE-0326



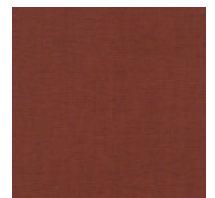
RE-0612



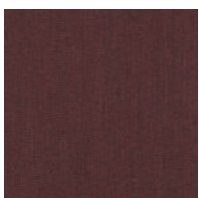
RE-0632



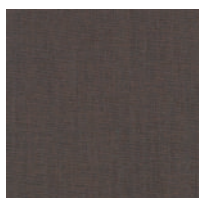
RE-0643



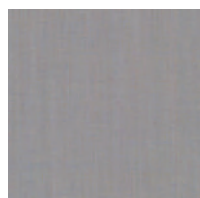
RE-0653



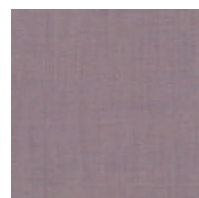
RE-0662



RE-0672



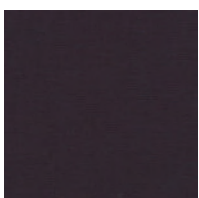
RE-0606



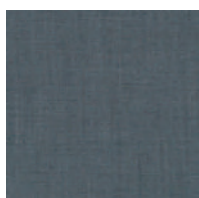
RE-0682



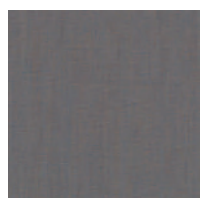
RE-0686



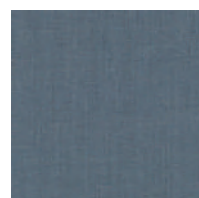
RE-0692



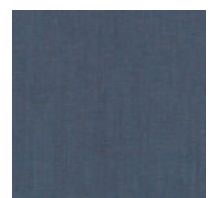
RE-0716



RE-0722



RE-0733

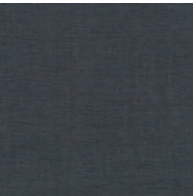


RE-0743

FABRIC D TYPE

REMIX 3

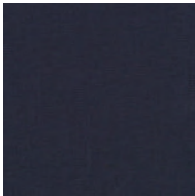
90% NEW WOOL WORSTED 10% NYRON



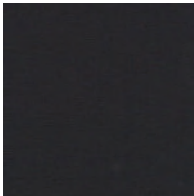
RE-0753



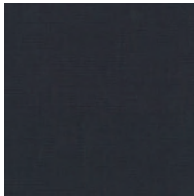
RE-0762



RE-0733



RE-0783



RE-0796



RE-0816



RE-0823



RE-0836



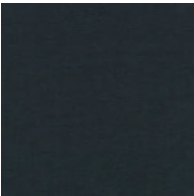
RE-0842



RE-0852



RE-0866



RE-0873



RE-0906



RE-0912



RE-0923



RE-0933



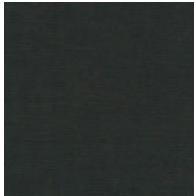
RE-0942



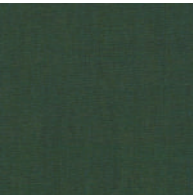
RE-0954



RE-0962



RE-0973



RE-0982



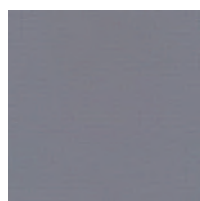
RE-0996

## FABRIC D TYPE

REVIVE 1

100% RECYCLED POLYESTER

同系の濃淡配色、または対比の組み合わせによる2色の単色の糸によって構成されています。  
再生ポリエステルを使用しており、環境にも優しい生地です。



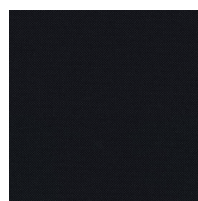
RV-0144



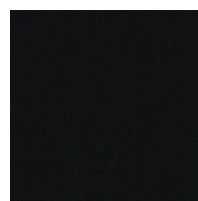
RV-0154



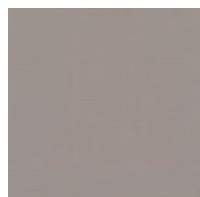
RV-0164



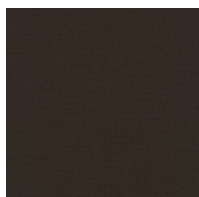
RV-0184



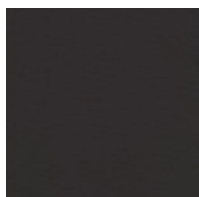
RV-0194



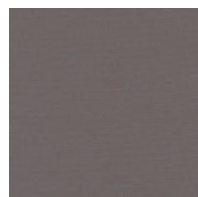
RV-0224



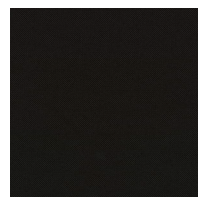
RV-0274



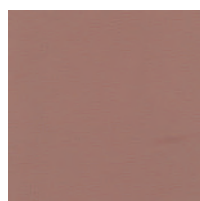
RV-0284



RV-0324



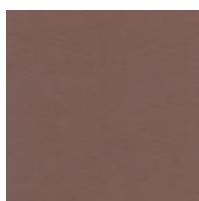
RV-0384



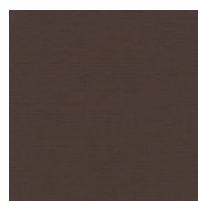
RV-0414



RV-0424



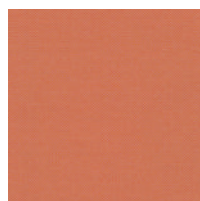
RV-0434



RV-0454



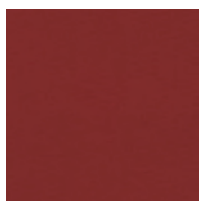
RV-0524



RV-0534



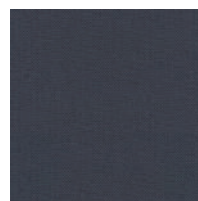
RV-0634



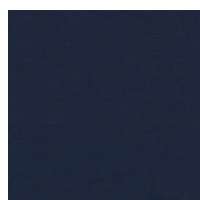
RV-0664



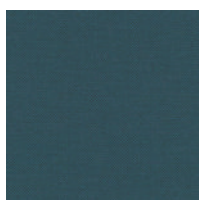
RV-0754



RV-0764



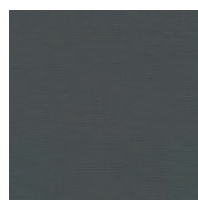
RV-0774



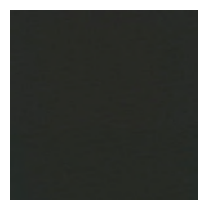
RV-0834



RV-0914



RV-0944



RV-0974

## FABRIC D TYPE

### ULTRASUEDE

80% POLYESTER 20% POLYURETHANE

スエード調の人口皮革素材。なめらかな独特の肌触りでしわになりにくく、  
通気性にも優れたハイテク性能のため、汚れやひっかき傷にも強い生地です。

1/4



US-N108  
SEA SALT



US-5969  
FOG



US-N128  
MIST GRAY



US-5810  
PLATINUM



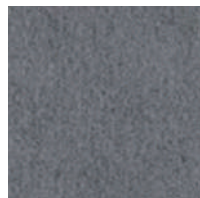
US-N118  
SILVER GRAY



US-5789  
GRAPHITE



US-5970  
FRENCH GRAY



US-5971  
DEEP FRENCH GRAY



US-5566  
PEWTER



US-5788  
CHARCOAL



US-5709  
BLACK ONYX



US-3271  
TAUPE



US-4M18  
ASH GRAY



US-4M08  
CARBON GRAY



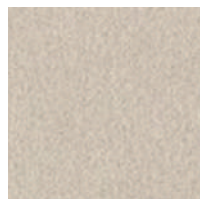
US-3910  
TAPIOKA



US-3366  
STONE



US-N138  
DARK GREGE



US-3581  
DOE



US-3914  
PEBBLE



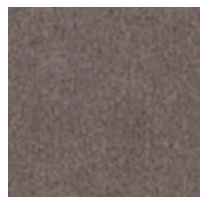
US-3918  
PEAT



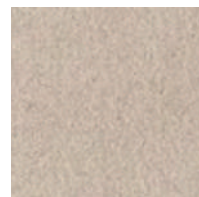
US-6232  
BLUSH



US-N148  
CAPPUCINO



US-3274  
BEAVER



US-3916  
DOESKIN



US-3092  
SAHARA

# FABRIC D TYPE

ULTRASUEDE

80% POLYESTER 20% POLYURETHANE

2/4



US-3367  
ELEPHANT



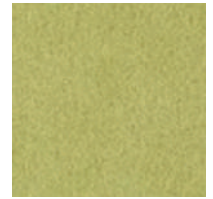
US-3913  
BRANCH



US-3147  
COFFEE BEAN



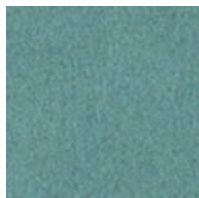
US-4577  
CITRON



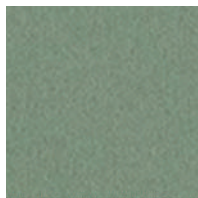
US-4488  
LIME



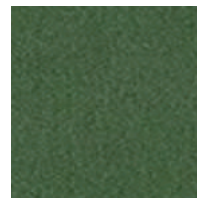
US-4147  
OPALENE



US-7142  
REAL TEAL



US-N268  
JADE GREEN



US-N158  
LOTUS GREEN



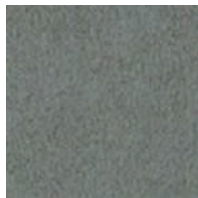
US-4397  
EUCALYPTUS



US-3367  
ELEPHANT



US-4398  
LICHEN



US-4396  
SAGE



US-4342  
SHETLAND



US-4M38  
CAPER



US-4341  
MOSS



US-4M48  
BLACK OLIVE



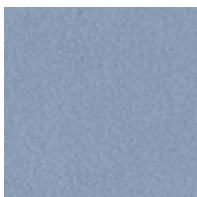
US-6M08  
FIR GREEN



US-2756  
HORIZON



US-2754  
MALIBU



US-N258  
BLUE DAISY



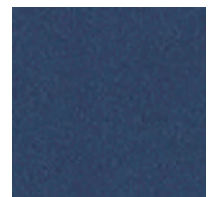
US-7397  
ROBIN'S EGG



US-7389  
SOUTH BEACH



US-2530  
REGAL BLUE



US-6M28  
COSMIC

# FABRIC D TYPE

ULTRASUEDE

80% POLYESTER 20% POLYURETHANE

3/4



US-2755  
BRITTANY



US-N168  
SNOW BLUE



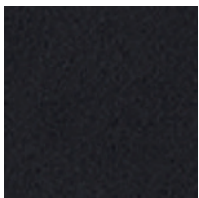
US-2539  
BALTIC



US-2330  
INDIGO



US-2329  
STEEL BLUE



US-3D18  
DARK NAVY



US-5514  
PAPYRUS



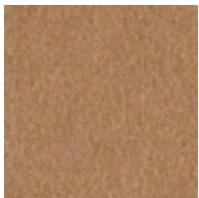
US-3281  
CAMEL



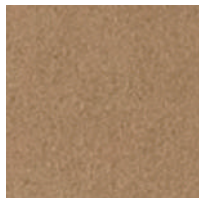
US-N178  
YELLOW FIZZY



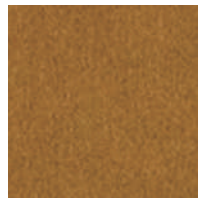
US-N188  
MANDARIN



US-5206  
GINGER



US-3093  
SPICE



US-5207  
CUMIN



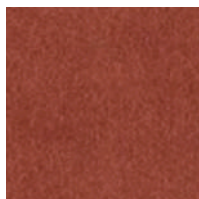
US-3588  
HIDE



US-8223  
ORANGE



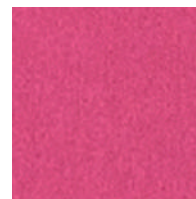
US-8244  
CANYON



US-8253  
TERRACOTTA



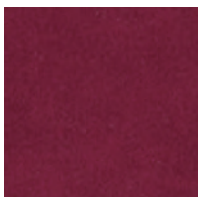
US-N208  
SALMON PINK



US-6628  
HOTPINK



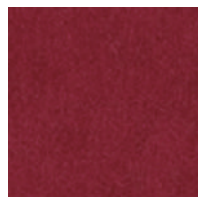
US-N218  
BERRY ROSE



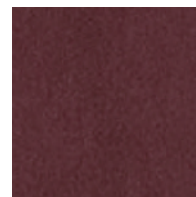
US-1240  
MULBERRY



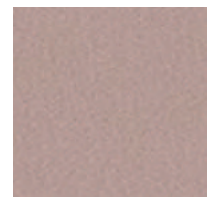
US-1367  
RED



US-1401  
MADEIRA



US-1155  
BURGUNDY



US-N238  
SHELL BEIGE

FABRIC D TYPE

ULTRASUEDE

80% POLYESTER 20% POLYURETHANE



US-N228  
MIST MAUVE



US-9441  
AFRICAN VIOLET



US-9393  
WILD PLUM



US-6M38  
VINTAGE PLUM



US-9391  
AMETHST



US-N248  
MARRONGLACES



US-6M48  
COCOA