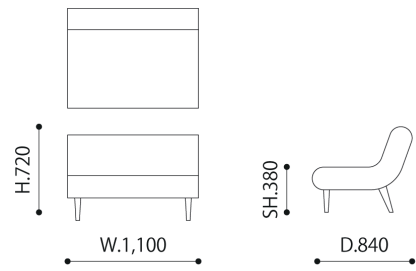


008 SOFA

Christophe Pillet, 1997

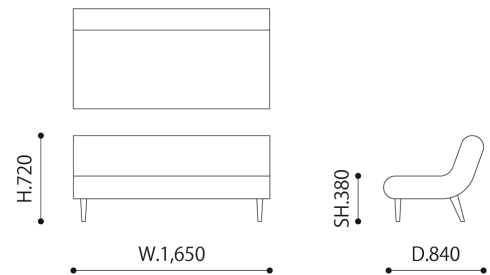
M size

CODE | CP1007-M
SIZE | W.1,100 × D.840 × H.720 / SH.380
MATERIAL | Leg : Beech
Seat : Urethane foam + Fabric
COLOR | Leg : Natural, Dark brown
PRICE | A type : ¥385,000- (excluding tax : ¥350,000-)
B type : ¥407,000- (excluding tax : ¥370,000-)
C type : ¥429,000- (excluding tax : ¥390,000-)
D type : ¥451,000- (excluding tax : ¥410,000-)



L size

CODE | CP1007-L
SIZE | W.1,650 × D.840 × H.720 / SH.380
MATERIAL | Leg : Beech
Seat : Urethane foam + Fabric
COLOR | Leg : Natural, Dark brown
PRICE | A type : ¥440,000- (excluding tax : ¥400,000-)
B type : ¥462,000- (excluding tax : ¥420,000-)
C type : ¥495,000- (excluding tax : ¥450,000-)
D type : ¥517,000- (excluding tax : ¥470,000-)



COLOR VARIATION



Natural

Dark brown

FABRIC A TYPE

NC

70% Acrylic 30%Wool

ウールを使用しているため、天然素材特有の自然な質感がありながらも、耐久性に優れています。
平織でシンプルかつカラーバリエーションが豊富なため、部屋の雰囲気に合わせてやすい生地です。

1/3



NC-058



NC-019



NC-177



NC-178



NC-029



NC-031



NC-028



NC-030



NC-033



NC-034



NC-062



NC-113



NC-160



NC-180



NC-116



NC-039



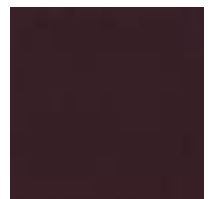
NC-111



NC-059



NC-107



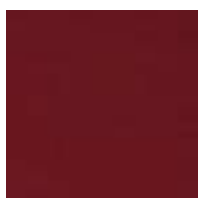
NC-104



NC-061



NC-040



NC-158



NC-176



NC-060

FABRIC A TYPE

NC

70% Acrylic 30%Wool

2/3



NC-101



NC-131



NC-103



NC-041



NC-132



NC-145



NC-018



NC-020



NC-045



NC-052



NC-024



NC-023



NC-024



NC-159



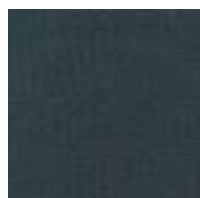
NC-186



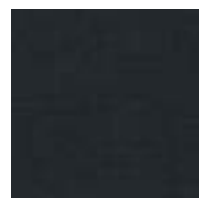
NC-140



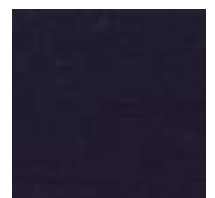
NC-055



NC-057



NC-044



NC-027



NC-120



NC-054



NC-053



NC-043



NC-010

FABRIC A TYPE

NC

70% Acrylic 30%Wool

3/3



NC-035



NC-125



NC-136



NC-126



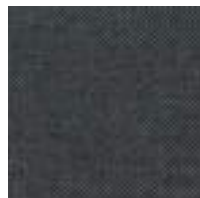
NC-127



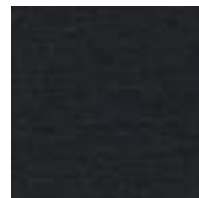
NC-143



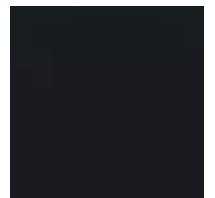
NC-012



NC-157



NC-128



NC-129



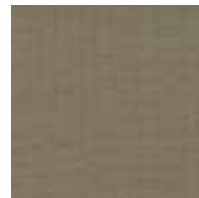
NC-011



NC-121



NC-035



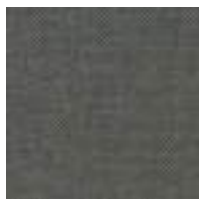
NC-122



NC-156



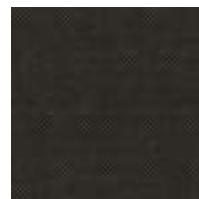
NC-051



NC-012



NC-013



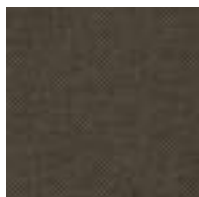
NC-014



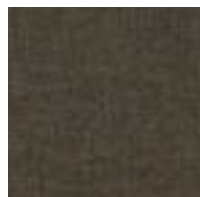
NC-015



NC-156



NC-123



NC-130



NC-124



NC-016

FABRIC A TYPE

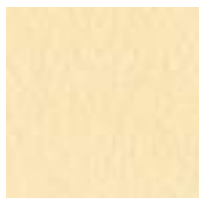
HILARGO

100% Vinyl Chloride

メンテナンス性に優れており、普段の手入れは乾拭きか水拭きで充分です。
厚みがあり、ソファが張り感のある綺麗なフォルムになります。



LG-8598(2432)



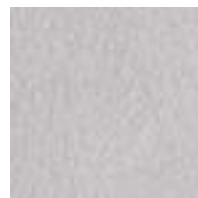
LG-8599(2437)



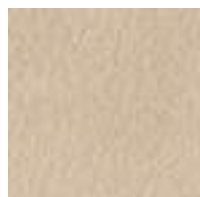
LG-8600(2442)



LG-8601(2447)



LG-8602(2452)



LG-8603(2433)



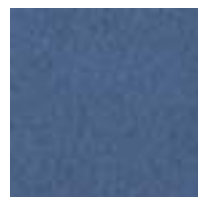
LG-8604(2438)



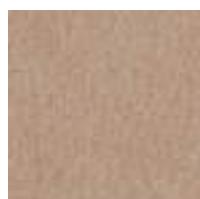
LG-8605(2443)



LG-8606(2448)



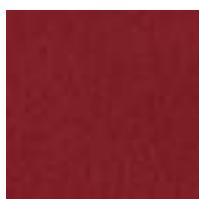
LG-8607(2453)



LG-8608(2434)



LG-8609(2439)



LG-8610(2444)



LG-8611(2449)



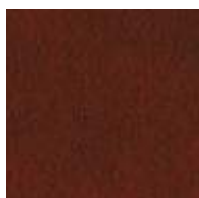
LG-8612(2454)



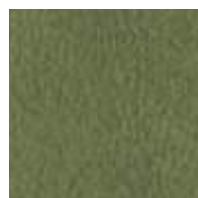
LG-8613(2435)



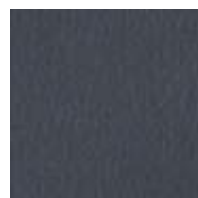
LG-8614(2440)



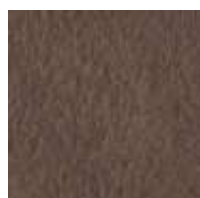
LG-8615(2445)



LG-8616(2450)



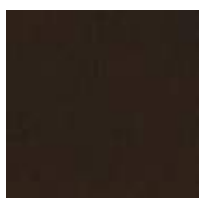
LG-8617(2455)



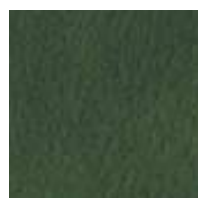
LG-8618(2436)



LG-8619(2441)



LG-8620(2446)



LG-8621(2451)



LG-8622(2456)

FABRIC B TYPE

CALEIDO

37% Linen 63% Cotton

自然素材で色染めしていますので、鮮やかでありながら優しい色合いが特徴です。

また、天然素材の中でも強度のある繊維のため、長年お使いいただいても毛玉になりにくく、耐久性も高いです。

1/2



CL-1410
VANILLA



CL-1419
IVORY



CL-3788
ECRU



CL-2897
MUSTARD



CL-1404
SAFFRON



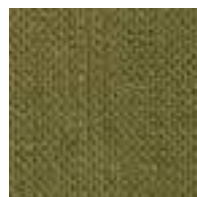
CL-1528
OLIVE



CL-4001
BASIL



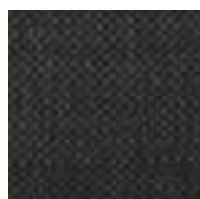
CL-4003
GROVE



CL-4225
MOSS



CL-2763
FOREST



CL-3798
HEARB



CL-2248
MINT



CL-1469
AQUA



CL-4724
COAST



CL-1551
VIRIDIAN



CL-4191
LAKE BLUE



CL-1471
WATER BLUE



CL-1470
INDIGO



CL-1499
BLUE



CL-3790
TAUPE



CL-4191
LAKE BLUE



CL-3790
TAUPE



CL-4201
LINEN TWEED



CL-4141
SMOKE



CL-4705
BROWN OAK

FABRIC B TYPE

CALEIDO

37% Linen 63% Cotton



CL-2884
CHOCOLATE



CL-2934
CHARCOAL



CL-4772
FEATHER



CL-1497
GERY



CL-5720
MERINO



CL-4298
ROVE



CL-5619
STEEL



CL-4004
GRAPE



CL-4002
LAVENDER



CL-4006
RASBERRY



CL-1459
PLUM



CL-2490
CORAL



CL-2898
ROUGE

FABRIC B TYPE

MODENA

100% Cotton

自然素材で色染めしていますので、鮮やかでありながら優しい色合いが特徴です。

また、天然素材の中でも強度のある繊維のため、長年お使いいただいても毛玉になりにくく、耐久性も高いです。



MD-7196
BISCUIT



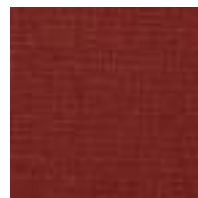
MD-7768
ANTIQUE BEIGE



MD-7313
PAPRIKA



MD-7246
CORAL



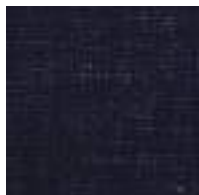
MD-7698
BRICK



MD-7200
RAINFOREST



MD-7022
ASH



MD-7581
DENIM

FABRIC D TYPE

REMIX 3

90% NEW WOOL WORSTED 10% NYRON

緻密でミニマルな織りの生地。

最大3トーン重ねて作られるメランジェ糸を2種類組み合わせることで生まれる鮮やかな色彩が特徴です。

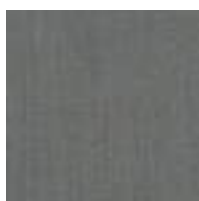
1/3



RE-0123



RE-0126



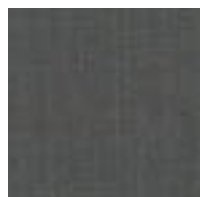
RE-0133



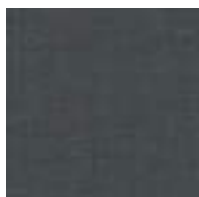
RE-0136



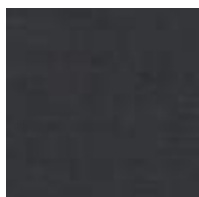
RE-0143



RE-0152



RE-0163



RE-0173



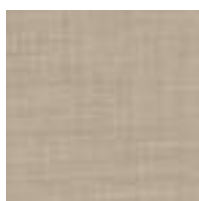
RE-0183



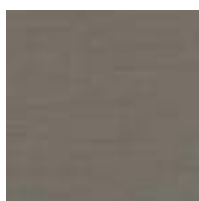
RE-0196



RE-0113



RE-0223



RE-0233



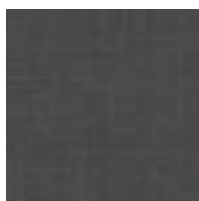
RE-0242



RE-0252



RE-0266



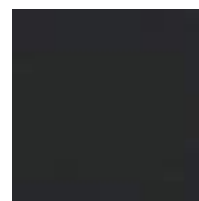
RE-0276



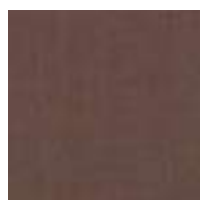
RE-0286



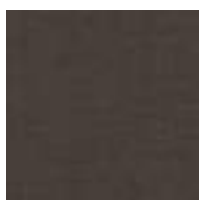
RE-0296



RE-0393



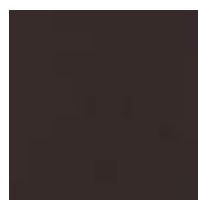
RE-0346



RE-0356



RE-0362



RE-0373



RE-0383

FABRIC D TYPE

REMIX 3

90% NEW WOOL WORSTED 10% NYRON

2/3



RE-0406



RE-0516



RE-0536



RE-0543



RE-0566



RE-0412



RE-0422



RE-0433



RE-0443



RE-0452



RE-0326



RE-0612



RE-0632



RE-0643



RE-0653



RE-0662



RE-0672



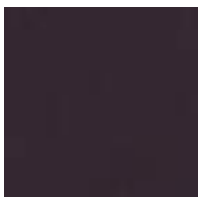
RE-0606



RE-0682



RE-0686



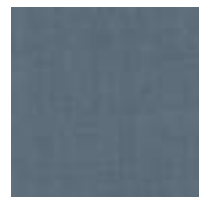
RE-0692



RE-0716



RE-0722



RE-0733



RE-0743

FABRIC D TYPE

REMIX 3

90% NEW WOOL WORSTED 10% NYRON

3/3



RE-0753



RE-0762



RE-0733



RE-0783



RE-0796



RE-0816



RE-0823



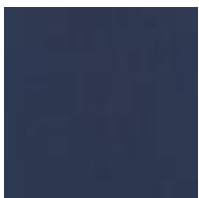
RE-0836



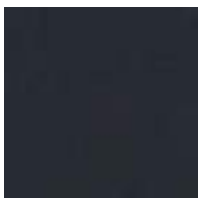
RE-0842



RE-0852



RE-0866



RE-0873



RE-0906



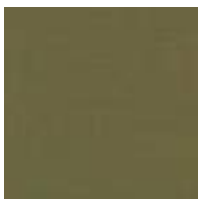
RE-0912



RE-0923



RE-0933



RE-0942



RE-0954



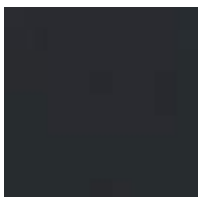
RE-0962



RE-0973



RE-0982



RE-0996

FABRIC D TYPE

REVIVE 1

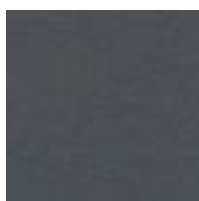
100% RECYCLED POLYESTER

同系の濃淡配色、または対比の組み合わせによる2色の単色の糸によって構成されています。

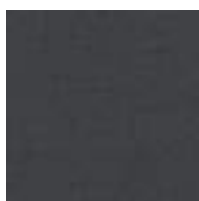
再生ポリエステルを使用しており、環境にも優しい生地です。



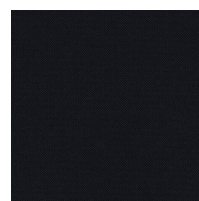
RV-0144



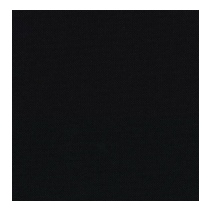
RV-0154



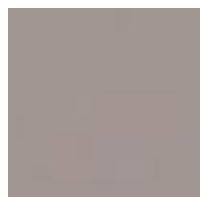
RV-0164



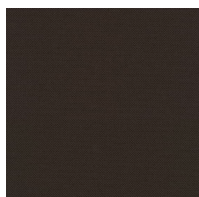
RV-0184



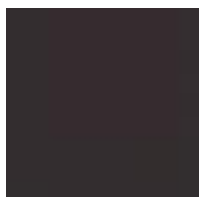
RV-0194



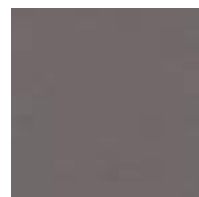
RV-0224



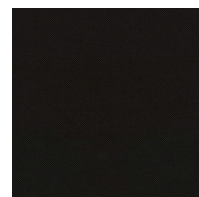
RV-0274



RV-0284



RV-0324



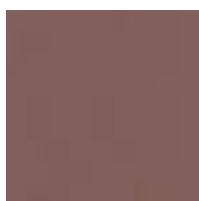
RV-0384



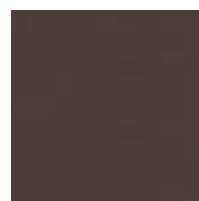
RV-0414



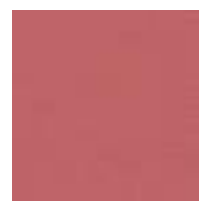
RV-0424



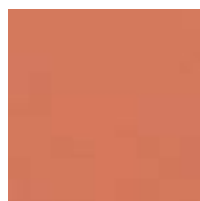
RV-0434



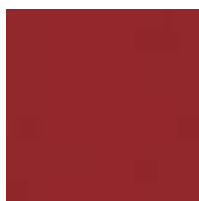
RV-0454



RV-0524



RV-0534



RV-0634



RV-0664



RV-0754



RV-0764



RV-0774



RV-0834



RV-0914



RV-0944



RV-0974

FABRIC D TYPE

ULTRASUEDE

80% POLYESTER 20% POLYURETHANE

スエード調の人口皮革素材。なめらかな独特の肌触りでしわになりにくく、
通気性にも優れたハイテク性能のため、汚れやひっかき傷にも強い生地です。

1/4



US-N108
SEA SALT



US-5969
FOG



US-N128
MIST GRAY



US-5810
PLATINUM



US-N118
SILVER GRAY



US-5789
GRAPHITE



US-5970
FRENCH GRAY



US-5971
DEEP FRENCH GRAY



US-5566
PEWTER



US-5788
CHARCOAL



US-5709
BLACK ONYX



US-3271
TAUPE



US-4M18
ASH GRAY



US-4M08
CARBON GRAY



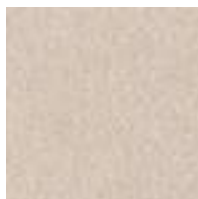
US-3910
TAPIOKA



US-3366
STONE



US-N138
DARK GREGE



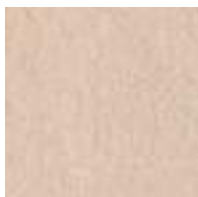
US-3581
DOE



US-3914
PEBBLE



US-3918
PEAT



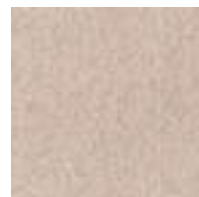
US-6232
BLUSH



US-N148
CAPPUCINO



US-3274
BEAVER



US-3916
DOESKIN



US-3092
SAHARA

FABRIC D TYPE

ULTRASUEDE

80% POLYESTER 20% POLYURETHANE

2/4



US-3367
ELEPHANT



US-3913
BRANCH



US-3147
COFFEE BEAN



US-4577
CITRON



US-4488
LIME



US-4147
OPALENE



US-7142
REAL TEAL



US-N268
JADE GREEN



US-N158
LOTUS GREEN



US-4397
EUCALYPTUS



US-3367
ELEPHANT



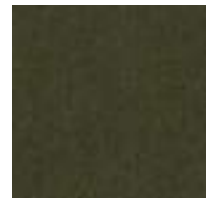
US-4398
LICHEN



US-4396
SAGE



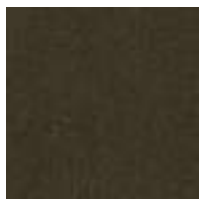
US-4342
SHETLAND



US-4M38
CAPER



US-4341
MOSS



US-4M48
BLACK OLIVE



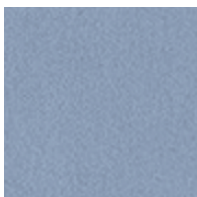
US-6M08
FIR GREEN



US-2756
HORIZON



US-2754
MALIBU



US-N258
BLUE DAISY



US-7397
ROBIN'S EGG



US-7389
SOUTH BEACH



US-2530
REGAL BLUE



US-6M28
COSMIC

FABRIC D TYPE

ULTRASUEDE

80% POLYESTER 20% POLYURETHANE

3/4



US-2755
BRITTANY



US-N168
SNOW BLUE



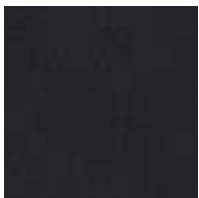
US-2539
BALTIC



US-2330
INDIGO



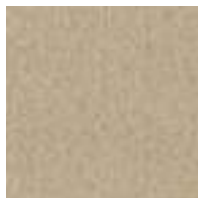
US-2329
STEEL BLUE



US-3D18
DARK NAVY



US-5514
PAPYRUS



US-3281
CAMEL



US-N178
YELLOW FIZZY



US-N188
MANDARIN



US-5206
GINGER



US-3093
SPICE



US-5207
CUMIN



US-3588
HIDE



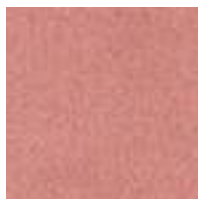
US-8223
ORANGE



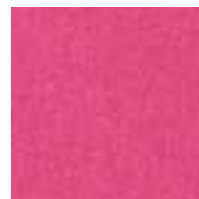
US-8244
CANYON



US-8253
TERRACOTTA



US-N208
SALMON PINK



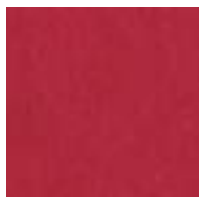
US-6628
HOTPINK



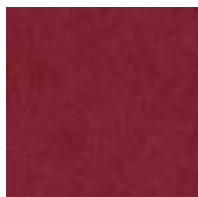
US-N218
BERRY ROSE



US-1240
MULBERRY



US-1367
RED



US-1401
MADEIRA



US-1155
BURGUNDY



US-N238
SHELL BEIGE

FABRIC D TYPE

ULTRASUEDE

80% POLYESTER 20% POLYURETHANE



US-N228
MIST MAUVE



US-9441
AFRICAN VIOLET



US-9393
WILD PLUM



US-6M38
VINTAGE PLUM



US-9391
AMETHST



US-N248
MARRONGLACES



US-6M48
COCOA